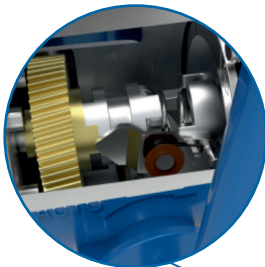


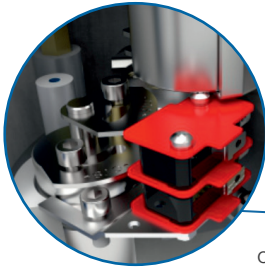
UED series explosion-proof electric actuator

Manual Clutching Handle



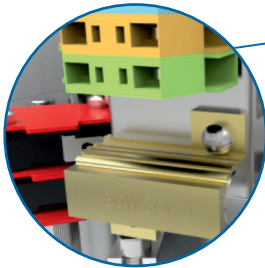
- The handle used to shift to manual clutching at emergency operation
- Back to auto operation mode automatically when the actuator power on

Cam and Limit Switch



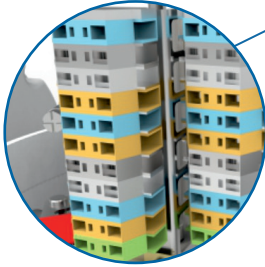
- Easy setting by two screws
- Each cam could be set separately
- The cam position would be kept once the setting done

Space heater

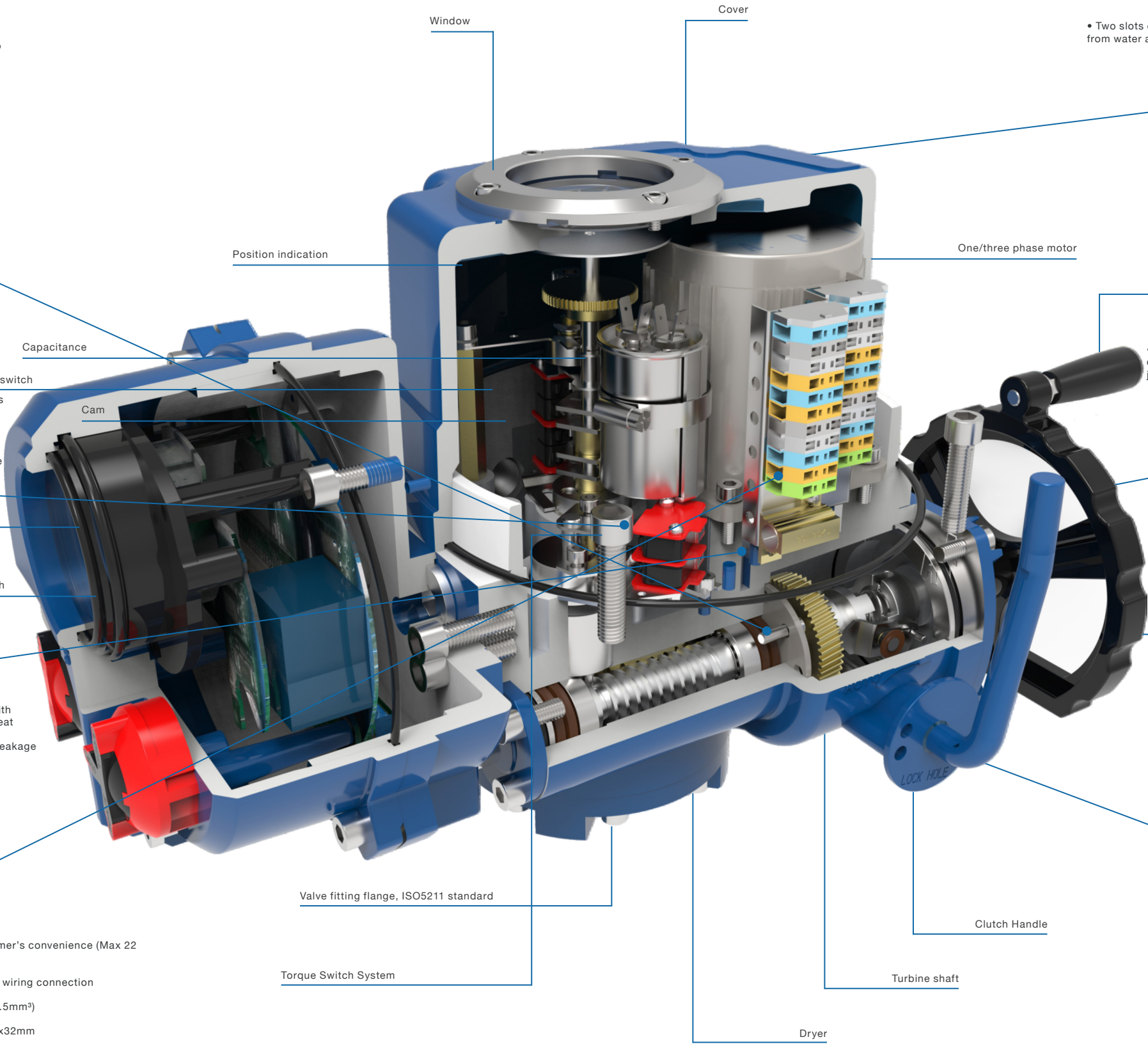


- 7-10W, ceramic housing with thermostal to prevent overheat
- Without risk of electricity leakage

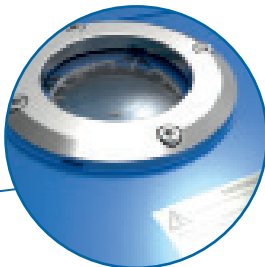
Terminal block



- Enough terminal for customer's convenience (Max 22 points)
- Proven reliability and tight wiring connection
- Terminal length: 8-9mm/(2.5mm³)
- Terminal dimension:10x22x32mm

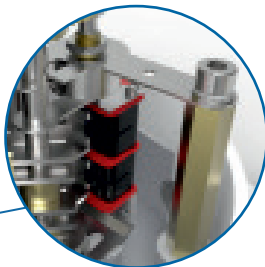


Valve Position Window



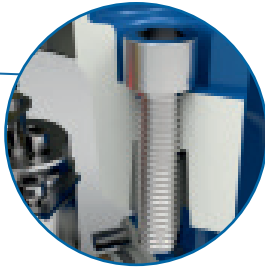
- Two slots on window cover and convex lens keep it dry from water and easy observing.

Torque switch



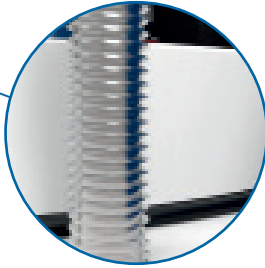
- Torque switch protects the motor and internal components from overheating caused by valve jammed.

Anti-off bolt



- Cover bolts are specially anty-off design

Inclined Interface



- The interface between the cover and body designed at 3 degree for easy removing

Position indication

One/three phase motor

Handwheel

Capacitance

Limit switch

Cam

Option Part for analog control

Rotary Switch

Valve fitting flange, ISO5211 standard

Torque Switch System

Clutch Handle

Turbine shaft

Dryer